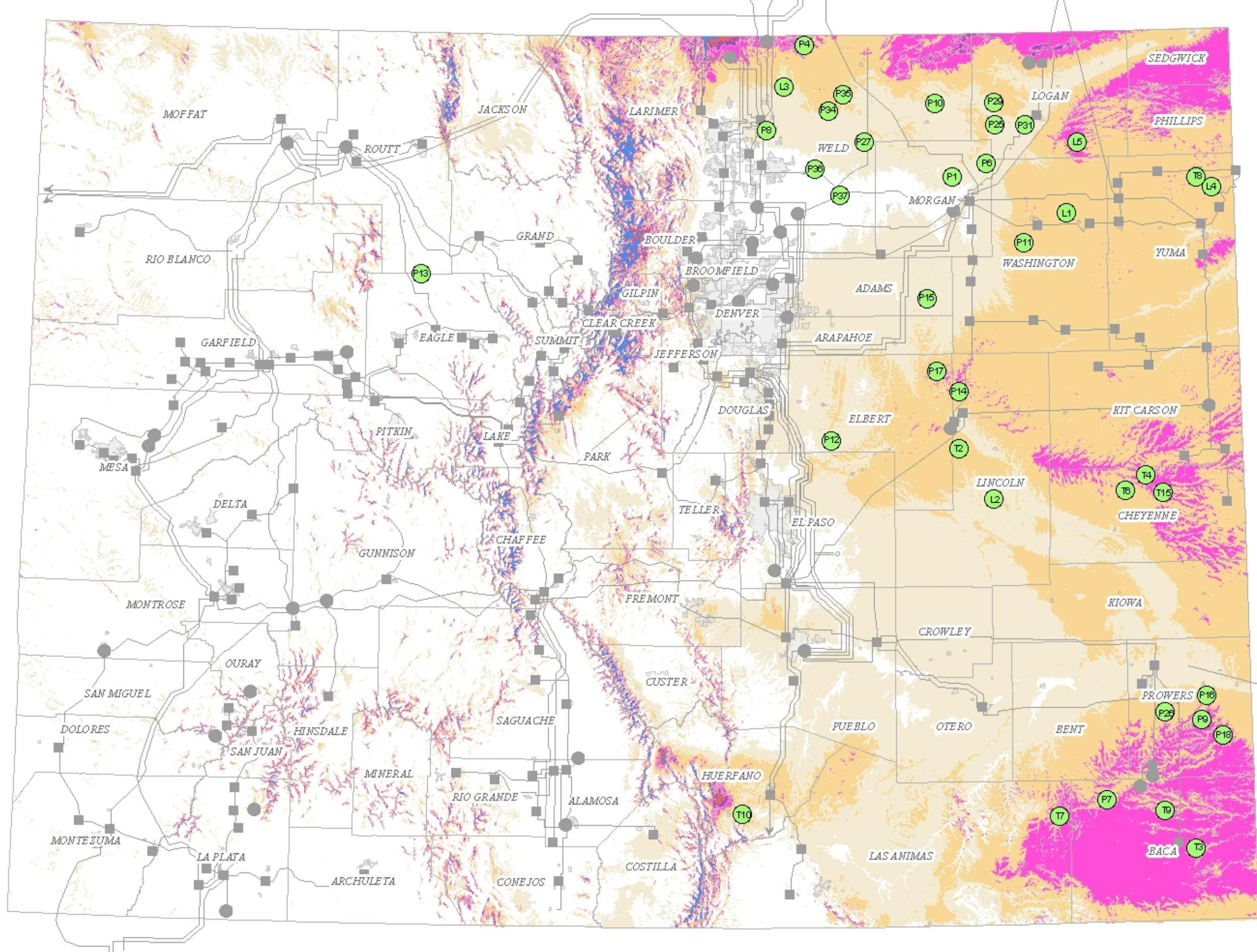


Wind Projects in LGIP  
Interconnection Queue



Wind Power at 50 Meters

Wind Power Class	Resource Potential	Wind Power Classification		
		Wind Power Density at 50 m W/m <sup>2</sup>	Wind Speed at 50 m m/s	Wind Speed at 90 m mph
1	Poor	0 - 200	6.0 - 5.9	0.0 - 13.2
2	Marginal	200 - 300	6.5 - 6.7	13.2 - 15.0
3	Fair	300 - 400	6.7 - 7.4	15.0 - 16.8
4	Good	400 - 500	7.4 - 7.9	16.8 - 17.7
5	Excellent	500 - 600	7.9 - 8.4	17.7 - 18.8
6	Outstanding	600 - 800	8.4 - 10.0	18.8 - 22.8
7	Superb	> 800	> 9.2	> 22.8

\*Wind speeds are based on a Weibull k of 2.0 at 1000 m elevation.

- WIND
- P = PSCo
- T = Tri-State
- L = Loveland WAPA

