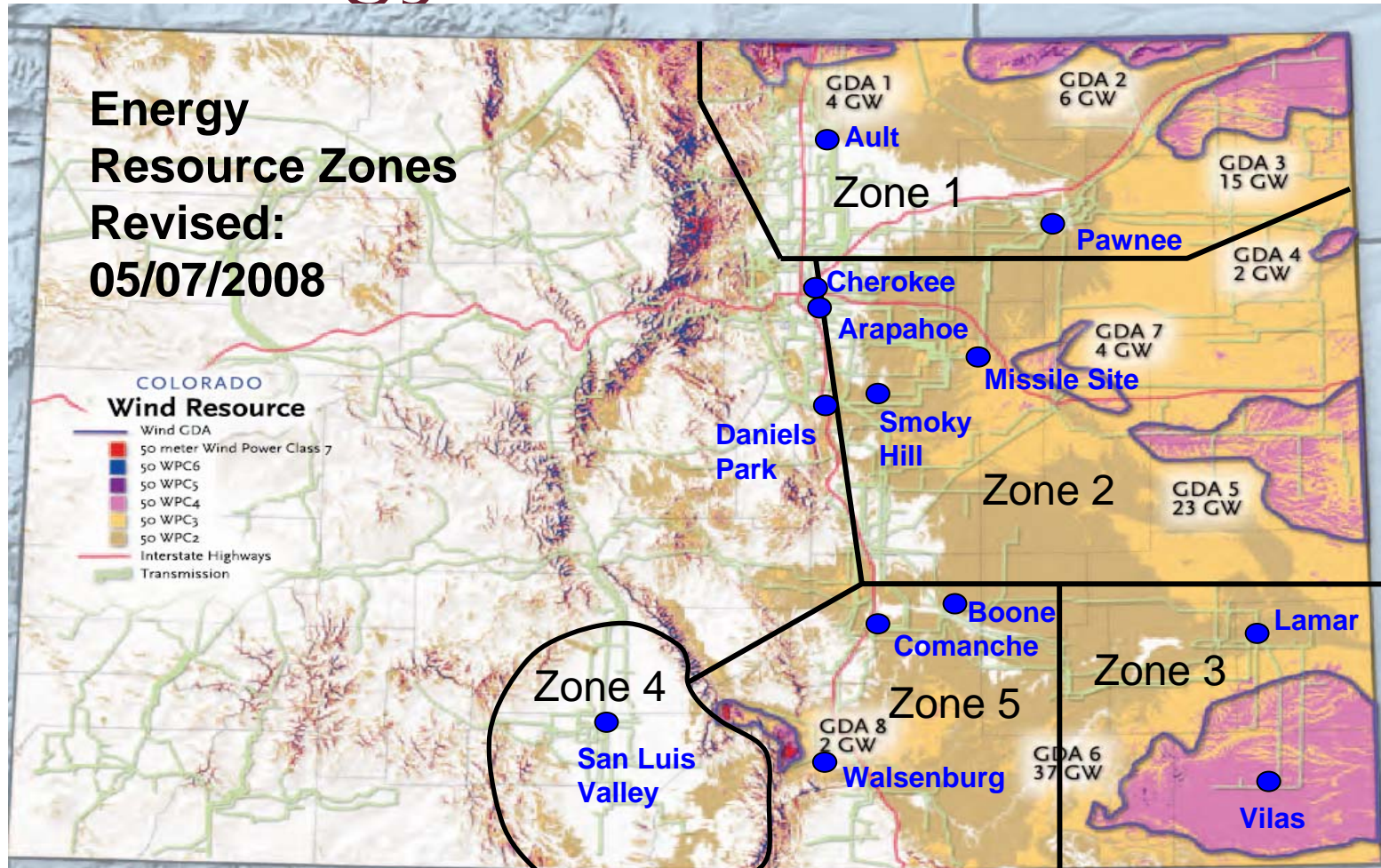


DRAFT

Senate Bill 100
Stakeholder Update
Friday, September 26, 2008



Energy Resource Zones



2008 – 2009 Schedule

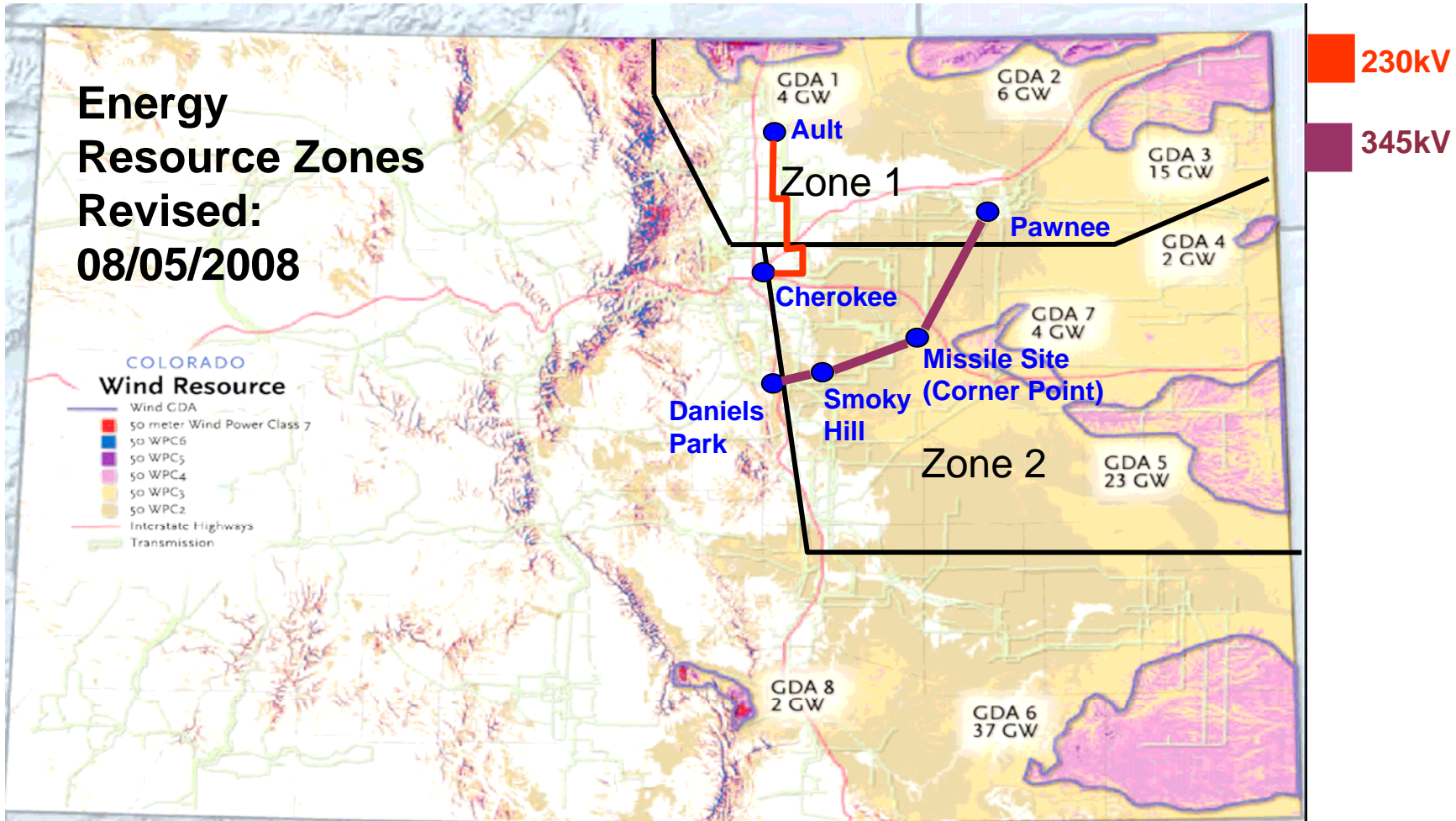
- **March 4, 2008: Kickoff Meeting**
- **April – July 2008: Transmission Study Groups**
- **August 20, 2008: CCPG stakeholder meeting**
- **September 26: Stakeholder Meeting**
- **November 2008: Issue Transmission Plans**
- **November 2008 – January 2009: Prioritize Plans & Perform Detailed Studies**
- **March 2009: File CPCN Applications**
- **October 31, 2009: SB100 Filing**

Process

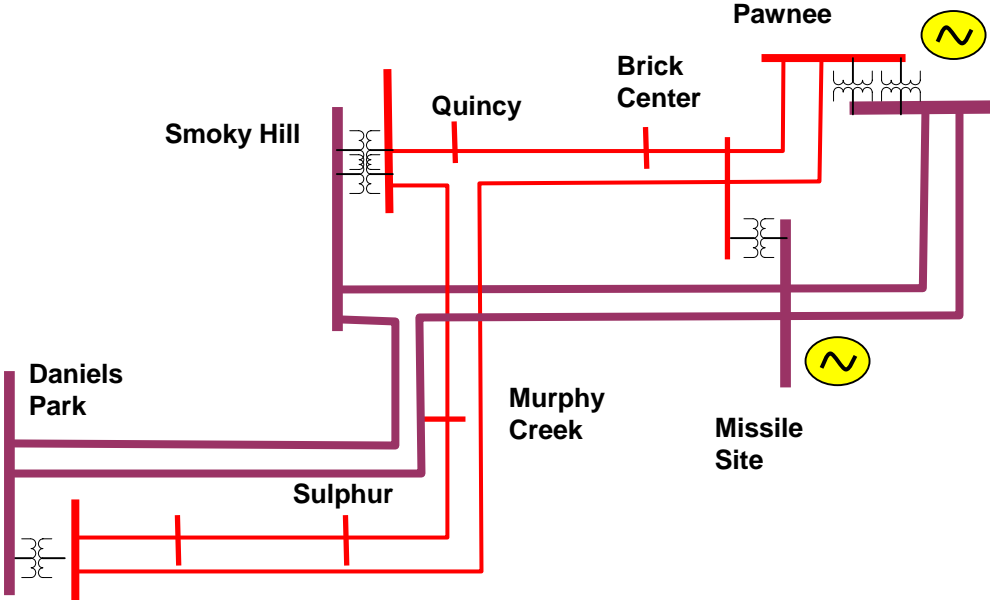
- **Identify Energy Resource Zones**
- **Prepare Transmission Base Cases**
- **Propose Resource Scenarios**
- **Develop Transmission Plans**
- **Present and Prioritize Plans**
- **Develop CPCN's**



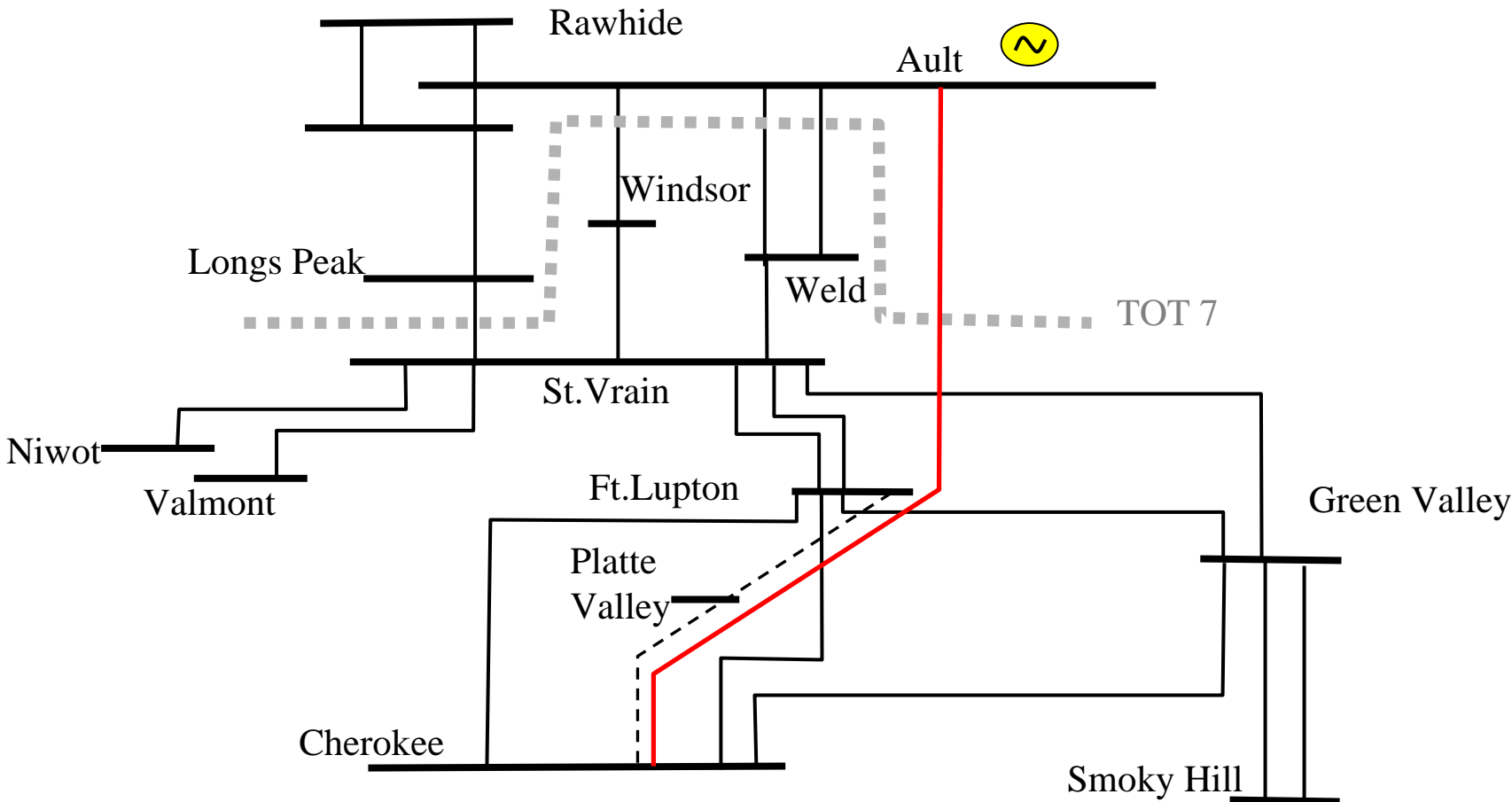
Potential Transmission Projects Zones 1 & 2



Zones 1 & 2 - Pawnee & Missile Site



Zone 1 Ault

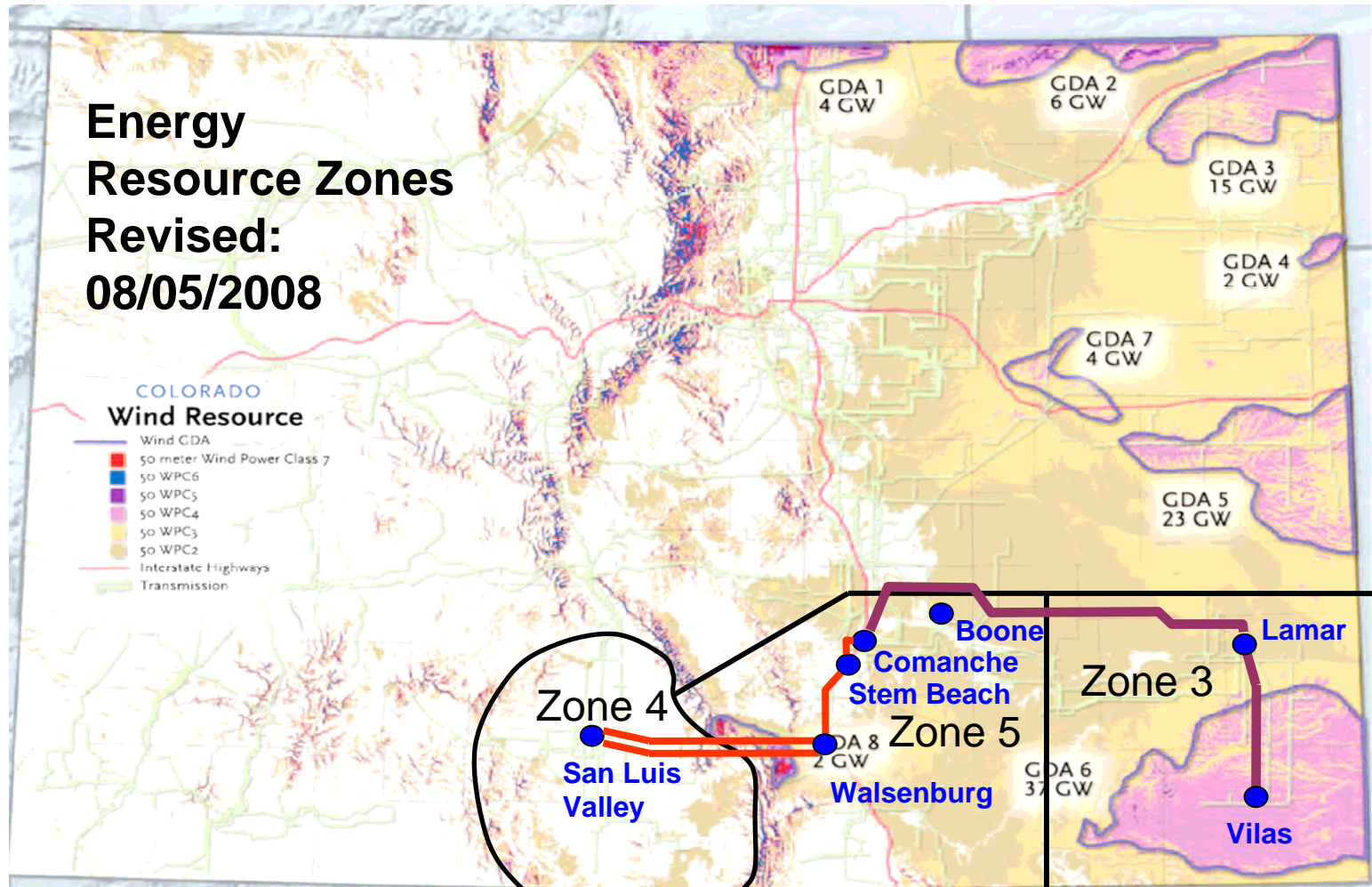


Potential Transmission Projects Zone 1 and 2

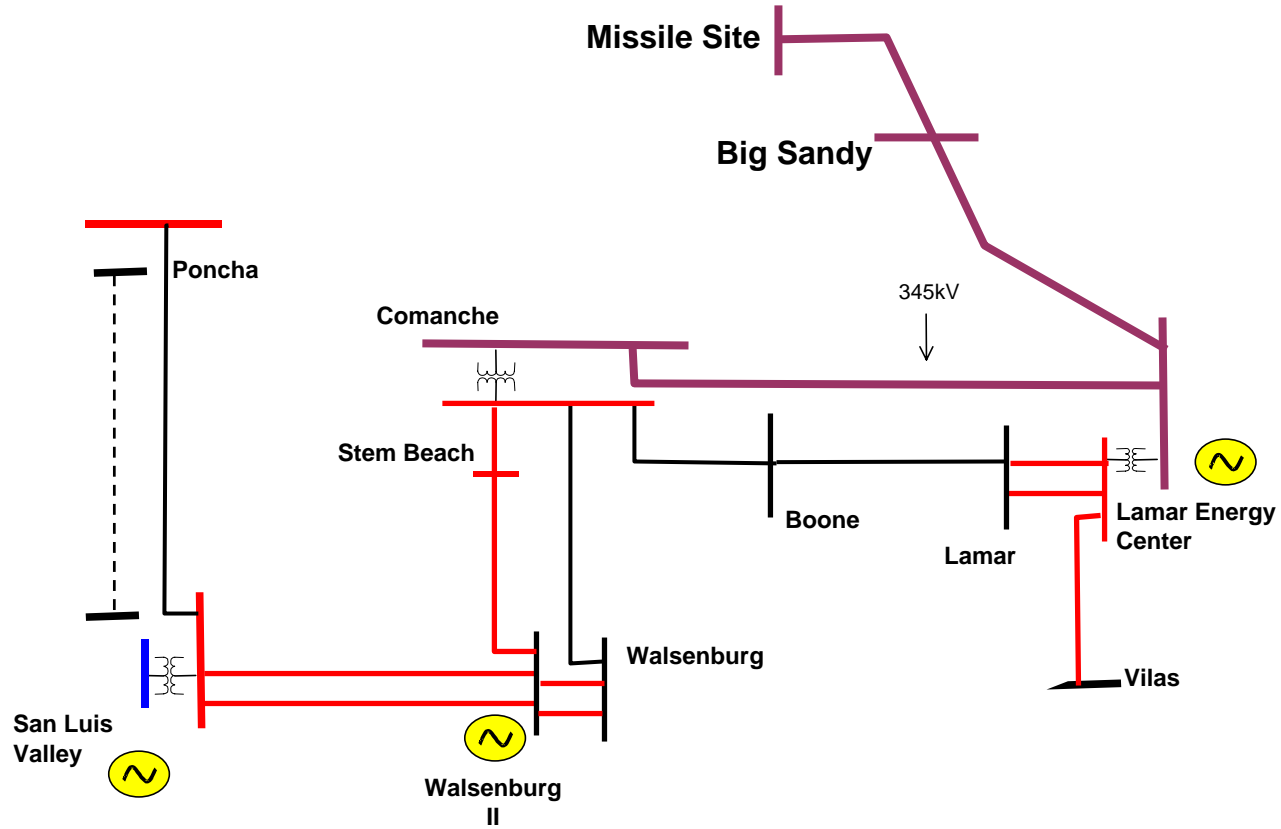
- ◆ **Ault – Cherokee 230kV Line (Energy Zone 1):** New single circuit 230kV line from Ault Substation to Ft. Lupton, transitioning to a 26-mile double circuit (one circuit operated at 115kV for TSG&T load, the other at 230kV for PSCo) from Ft. Lupton to Cherokee. **85 miles**
- ◆ **Missile Site Switchyard (Energy Zone 2):** New 230kV/345 kV switching station sectionalizing the existing Pawnee-Daniels Park 230kV Line. Designed for future expansion into a full 345-230kV substation to be used as a major interconnection point.
- ◆ **Pawnee to Smoky Hill to Daniels 345 kV line #2 (Energy Zone 1)**
- ◆ **Smoky Hill to Daniel Park 345 kV line. (Energy Zone 1)**



Potential Transmission Projects Zones 3, 4, & 5



Zones 3,4 &5 (Lamar, Walsenburg, San Luis Valley)



Potential Transmission Projects Zone 3

- ◆ **Lamar to Comanche 345 kV (Energy Zone 3):** New 345 kV line from Lamar to Comanche Substation. Potential joint project with TSG&T. **120 Miles**
- ◆ **Lamar to Limon/Big Sandy to Missile Site 345 kV (Energy Zone 3):** New 345 kV line from Lamar to Missile Site via Big Sandy (Limon) Substation. Potential joint project with TSG&T.
- ◆ **Lamar – Vilas 230/345kV Lines (Energy Zone 3):** A new 59-mile 230/345kV (230kV) line from Lamar Substation to Vilas Substation. **59 miles**

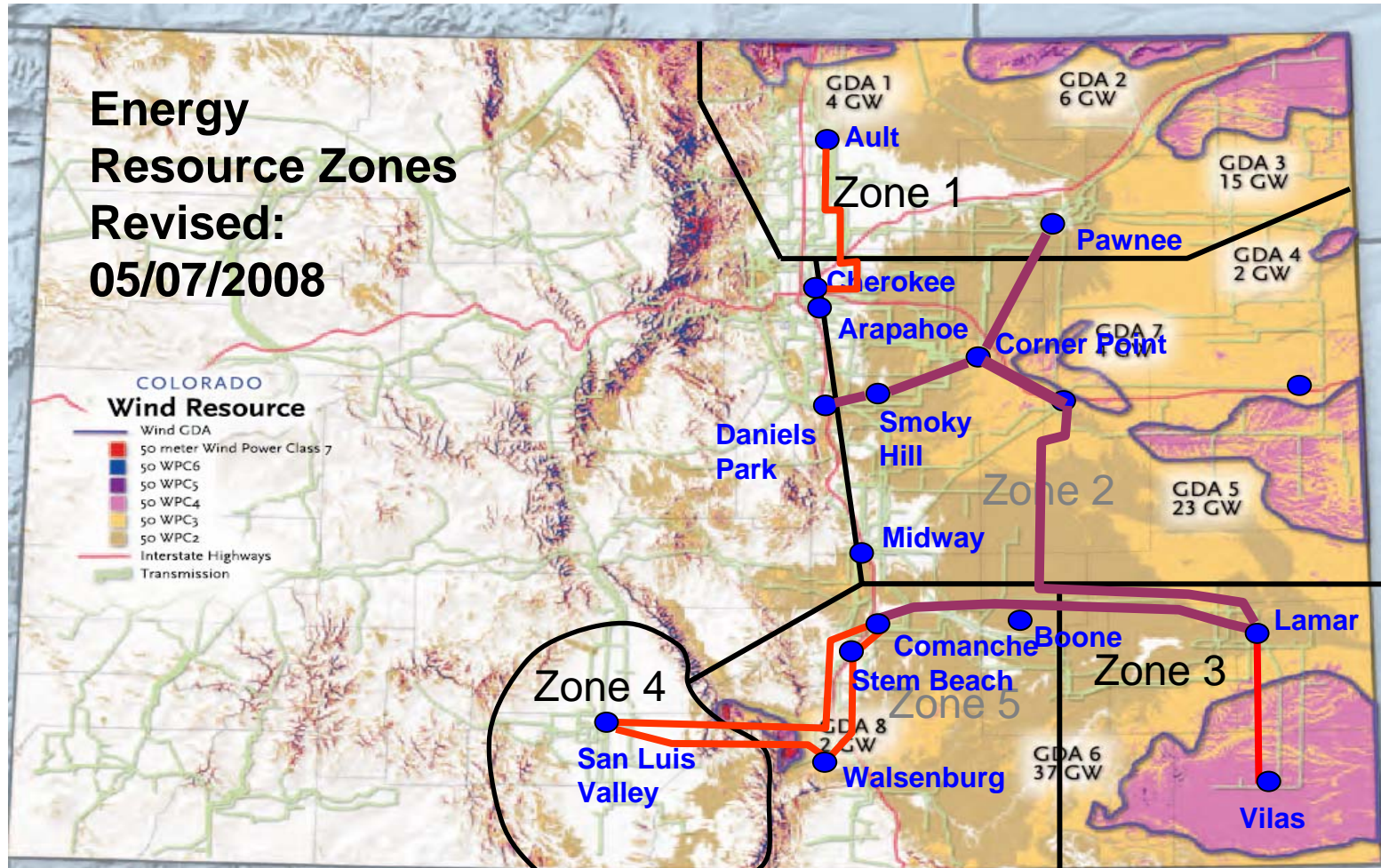


Potential Transmission Projects Zone 4 & 5

- ◆ **San Luis – Walsenburg double circuit 230 kV Line (Energy Zone 4):** New 230kV line from San Luis Valley Substation to Walsenburg substation. Joint project with TSG&T. **80 Miles**
- ◆ **New Walsenburg II Substation (Energy Zone 5):** New Substation near existing Walsenburg sub with capability for 230 kV and 345 kV. Potential joint project with TSG&T.
- ◆ **Walsenburg II to Comanche 230 kV or 345 kV line (Energy Zone 5):** New 345/230 kV line from Walsenburg to Comanche Substation. Joint project with TSG&T, **30 miles**



Overall Plan



Remaining Schedule

- **September 26, 2008 Stakeholders meeting**
- **November 2008: Issue Transmission Plans**
- **November 2008 – January 2009: Prioritize Plans and perform detailed CPCN Studies**
- **March 2009: File CPCN Applications**



Questions



PSCo Public Website

<http://www.rmao.com/wtpp/SB100.html>

