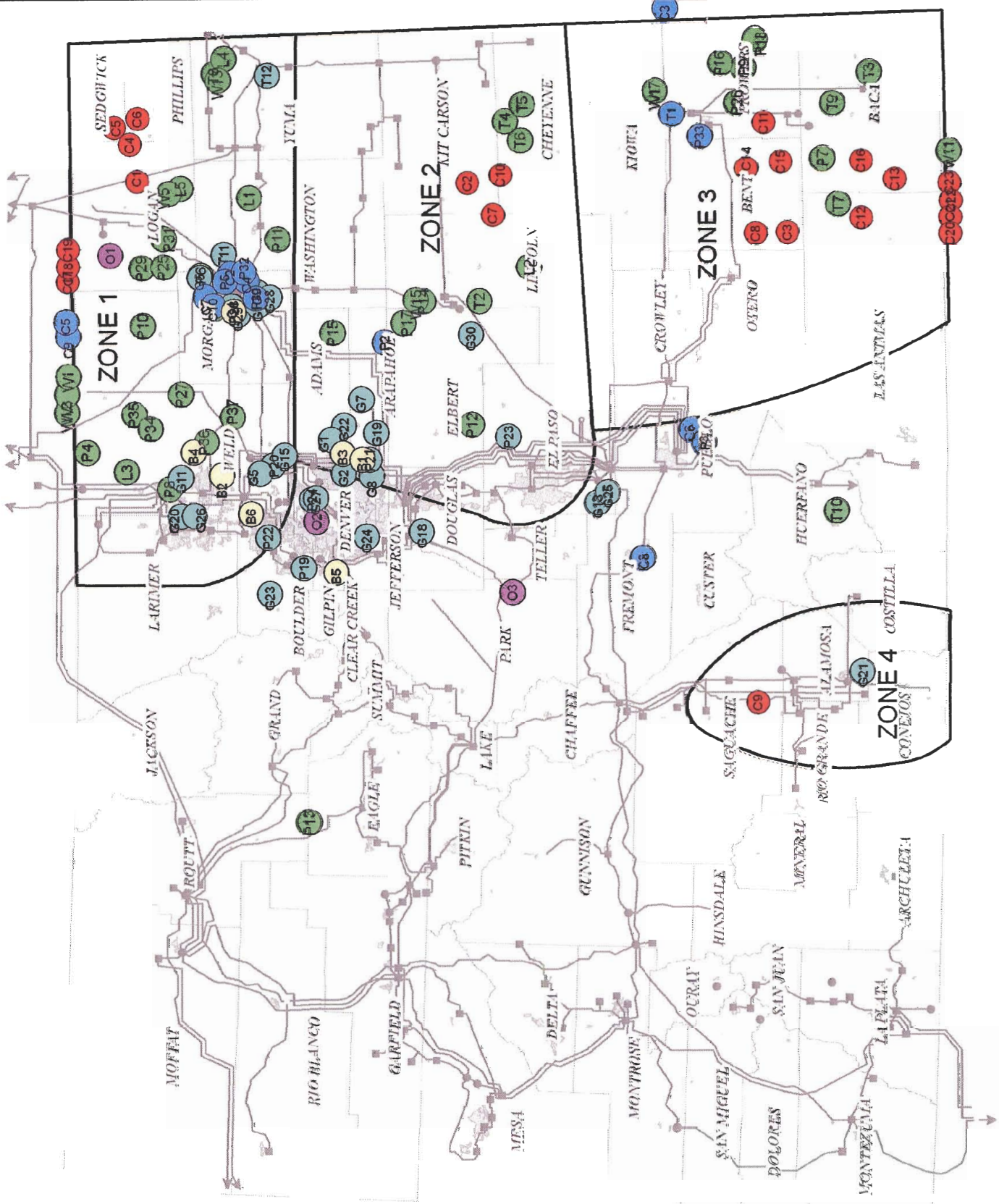


**All Locations
(LGIP, All Source,
SB100 Comments)**

- Legend**
- WIND
 - SOLAR
 - OTHER
 - GAS
 - COAL
 - BIOMASS
 - P = PSCo
 - T = Tri-State
 - L = Loveland WAPA



**Colorado Transmission Provider LGIP Requests
As Posted on OASIS as of May 3, 2007**

Map Designation	Transmission Provider	MW Capacity	Generator Type	ISD	Interconnection Point	County, State	Oasis Request	Zone
P3	PSCo	750	Coal	10/1/2009	Comanche 230kV	Pueblo, CO	GI-2003-3	0
P19	PSCo	115	Gas	5/1/2007	Plains End 230kV	Jefferson, CO	GI-2006-1a	0
P24	PSCo	169	Gas	5/1/2009	Silver Saddle 230kV	Adams, CO	GI-2006-1f	0
T10	TSGT	250	Wind	12/1/2011	Walsenburg-Gladstone 230kV	Huerfano, CO	TI-07-0305	0
P13	PSCo	80	Wind	12/31/2006	Foidel Creek-Wolcott 230kV	Eagle, CO	GI-2004-8	0
P28	PSCo	50	Biomass	3/2/2009	Hudson 115kV	Weld, CO	GI-2006-1j	1
P5	PSCo	750	Coal	10/1/2009	Pawnee 230kV	Morgan, CO	GI-2003-5	1
P30	PSCo	600	Coal	5/1/2013	Pawnee 230kV	Morgan, CO	GI-2006-3	1
P32	PSCo	675	Coal	5/1/2014	Pawnee 230kV	Morgan, CO	GI-2007-1	1
T11	TSGT	300	Gas	5/1/2009	Story 230kV substation	Morgan, CO	TI-07-0412A	1
T12	TSGT	300	Gas	5/1/2009	Wray 230kV substation	Yuma, CO	TI-07-0412B	1
P20	PSCo	91	Gas	5/1/2007	Ft. Lupton 230kV	Weld, CO	GI-2006-1b	1
P22	PSCo	269	Gas	6/1/2007	Ft. St. Vrain-Niwot 230kV	Weld, CO	GI-2006-1d	1
T8	TSGT	102	Wind	8/30/2008	Wauneta 115kV	Yuma, CO	TI-06-1127	1
P1	PSCo	300	Wind	12/1/2006	Pawnee 230kV	Morgan, CO	GI-2003-1	1
P4	PSCo	30	Wind	6/1/2004	Ponnequin 115kV	Laramie, WY	GI-2003-4	1
P6	PSCo	150	Wind	12/31/2006	Pawnee 230kV	Morgan, CO	GI-2004-1	1
P8	PSCo	275	Wind	12/31/2006	Ault-Weld 230kV	Weld, CO	GI-2004-3	1
P10	PSCo	402	Wind	12/30/2006	RMEC-Green Valley 230kV	Weld, CO	GI-2004-5	1
P11	PSCo	250	Wind	12/30/2006	Pawnee 230kV	Washington, CO	GI-2004-6	1
P25	PSCo	400	Wind	6/1/2007	Pawnee 230kV	Logan, CO	GI-2006-1g	1
P27	PSCo	300	Wind	3/1/2007	RMEC-Green Valley 230kV	Weld, CO	GI-2006-1i	1
P29	PSCo	200	Wind	10/9/2008	Pawnee 230kV	Logan, CO	GI-2006-2	1
P31	PSCo	200	Wind	10/1/2008	Pawnee 230kV	Logan, CO	GI-2006-4	1
P34	PSCo	300	Wind	10/15/2010	Undetermined	Weld, CO	GI-2007-3	1
P35	PSCo	300	Wind	11/1/2013	Undetermined	Weld, CO	GI-2007-4	1
P36	PSCo	50	Wind	12/31/2008	Near Keensburg, Colorado	Weld, CO	GI-2007-5	1
P37	PSCo	200	Wind	12/31/2008	Near Keensburg, Colorado	Weld, CO	GI-2007-6	1
L1	WAPA	100	Wind	-	Akron 115kV	Washington, CO	2004-G2	1
L3	WAPA	153	Wind	1/1/2009	Ault 230kV	Weld, CO	2004-G7	1
L4	WAPA	100	Wind	8/30/2008	Wauneta 115kV	Yuma, CO	2004-G8	1
L5	WAPA	120	Wind	1/1/2010	Near Fleming, Colorado	Logan, CO	2005-G1	1
P2	PSCo	500	Coal	6/1/2008	Smoky Hill-Pawnee 230kV	Elbert, CO	GI-2003-2	2
P21	PSCo	264	Gas	5/1/2007	Spruce 230kV	Adams, CO	GI-2006-1c	2
P23	PSCo	483	Gas	5/1/2007	Comanche-Daniels Park 230kV	El Paso, CO	GI-2006-1e	2
T2	TSGT	120	Wind	-	Big Sandy 115kV	Lincoln, CO	TI-04-1123	2
T4	TSGT	100	Wind	11/1/2008	Big Sandy-Burlington 230kV	Cheyenne/Kit Carson, CO	TI-06-0929A	2
T5	TSGT	200	Wind	11/1/2009	Big Sandy-Burlington 230kV	Cheyenne/Kit Carson, CO	TI-06-0929B	2
T6	TSGT	200	Wind	7/1/2011	Big Sandy-Burlington 230kV	Cheyenne/Kit Carson, CO	TI-06-0929C	2
P12	PSCo	200	Wind	12/1/2006	Midway-Daniels Park 230kV	Elbert, CO	GI-2004-7	2
P14	PSCo	300	Wind	12/1/2006	Smoky Hill-Pawnee 230kV	Elbert/Lincoln, CO	GI-2004-9	2
P15	PSCo	70	Wind	12/31/2005	Daniels Park-Pawnee 230kV	Adams, CO	GI-2004-10	2
P17	PSCo	199	Wind	12/31/2005	Daniels Park-Pawnee 230kV	Elbert, CO	GI-2004-12	2
L2	WAPA	100.5	Wind	-	Near Limon, Colorado	Lincoln, CO	2004-G4	2
T1	TSGT	600	Coal	6/1/2011	Lamar Energy Center 345/500kV	Prowers, CO	TI-06-0223	3
T3	TSGT	120	Wind	12/31/2007	Vilas 115kV	Baca, CO	TI-06-0505	3
T7	TSGT	500	Wind	11/1/2011	Lamar-Boone 230kV	Baca/Las Animas, CO	TI-06-0929D	3
T9	TSGT	156	Wind	12/15/2008	Lamar-Vilas 115kV	Baca, CO	TI-07-0125	3
P7	PSCo	238	Wind	9/31/2006	Lamar 230kV	Baca, CO	GI-2004-2	3
P9	PSCo	280	Wind	12/31/2006	Lamar 230kV	Prowers, CO	GI-2004-4	3
P16	PSCo	69	Wind	8/1/2005	Lamar 230kV	Prowers, CO	GI-2004-11	3
P18	PSCo	279	Wind	9/15/2006	Lamar 230kV	Prowers, CO	GI-2005-1	3
P26	PSCo	75	Wind	12/31/2006	Lamar 230kV	Prowers, CO	GI-2006-1h	3
P33	PSCo	675	Coal	5/1/2014	Lamar 230kV	Bent, CO	GI-2007-2	3
Number of Requests		54						
Zone 1 Totals (MW)		6,967						
Zone 2 Totals (MW)		2,737						
Zone 3 Totals (MW)		2,317						
Zone 4 Totals (MW)		-						

Public Service Company of Colorado
2005 All Source RFP Bids

Map Designation	LGIP Map Designation	MW Capacity	Generator Type	In-Service Date	Interconnection / Delivery Point	Zone
B5	-	0.8	Biomass	2007	Lookout Substation distribution feeder	0
O2	-	32.5	Biomass	2007 or 2008	Various	0
C6	-	78	Coal	May 2011 or May 2012	PSCo 115 kv interconnection with Aquila	0
C8	-	122	Coal	May 2012 or May 2013	PSCo 115 kv interconnection with Aquila	0
C8	-	55	Coal	2009 to 2012	PSCo 115 kv interconnection with Aquila	0
G24	-	127.3	Gas	2013	Arapahoe Power Plant	0
G13	-	30	Gas	2007	FRPC plant	0
G18	-	243	Gas	2008	Waterton Substation	0
G23	-	78.8	Gas	2013	Valmont Power Plant	0
G23	-	78.8	Gas	2007	Arapahoe Power Plant	0
G25	-	238	Gas	2013	Pueblo, CO	0
G25	-	163.0	Gas	2007 or 2008	Pueblo, CO	0
G27	P24	169.5	Gas	2007 or 2008	Riverdale Sub	0
G3	P19	228.6	Gas	2007 or 2008	Plains End Plant	0
G3	P19	113	Gas	2007	Plains End Plant	0
O3	-	0.22	Hydro	2007	Existing	0
B2	P28	50	Biomass	2009	230kV RMEC line or 115kV Hudson line	1
B4	-	6	Biomass	2007	Box Elder Substation	1
B6	-	1.405	Biomass	2005	United Power's distribution feeder	1
O1	-	2.8	Biomass	2008	WAPA 115kV near Peetz	1
C5	-	526	Coal	Jul 2011 or Jul 2012	Pawnee Substation	1
C10	-	53	Coal	June 2009	Brush Switchyard	1
C9	-	980	Coal	Dec 07 (W) Jun 08 (IGCC)	Ault Substation	1
C2	-	500	Coal	May 2012 or May 2013	Pawnee or Story	1
C7	-	110	Coal	May 2011 or May 2012	Brush Switchyard	1
C7	-	200	Coal	May 2011 or May 2012	Brush Switchyard	1
C7	-	118	Coal	May 2011 or May 2012	Brush Switchyard	1
C1	P30	554	Coal	10/1/2012	Pawnee Substation	1
C4	-	554	Coal	10/1/2012	Story Substation	1
G6	-	68	Gas	2009	Brush Switchyard	1
G9	-	452	Gas	2009 or 2010	Pawnee Substation	1
G10	-	444	Gas	2009	Pawnee Substation	1
G12	P20	369.6	Gas	2007	Ft. Lupton Switchyard	1
G12	P20	268	Gas	2009	Ft. Lupton Switchyard	1
G12	P20	301	Gas	2007	Ft. Lupton Switchyard	1
G12	P20	332	Gas	2007	Ft. Lupton Switchyard	1
G29	-	400	Gas	2007	Pawnee Substation	1
G9	-	314.5	Gas	2007 or 2008 for 2nd unit	Pawnee Substation	1
G10	-	253	Gas	2012	Existing	1
G11	-	30	Gas	2011	Monfort	1
G11	-	38	Gas	2011	Monfort	1
G11	-	38	Gas	2007	Monfort	1
G16	P22	269	Gas	2007 or later	New sub on FSV-Niwot 230kV	1
G20	-	110	Gas	2008	Windsor sub or new sub on FSV-Ault 230kV	1
G26	-	171.0	Gas	2007 or 2008	Windsor 230 kv Sub	1
G28	-	292	Gas	2008 or 2009	Pawnee Substation	1
G15	-	163	Gas	2008 or 2009	RMEC Switchyard	1
G4	-	75	Gas	2007	Brush Switchyard	1
G4	-	133	Gas	2007	Brush Switchyard	1
G4	-	208	Gas	2007	Brush Switchyard	1
G5	-	165	Gas	2008	Ft. Lupton Switchyard	1
G5	-	297	Gas	2008	Ft. Lupton Switchyard	1
W18	P8	261	Wind	Dec 2007	new tap south of Ault	1
W20	P11	201	Wind	Dec 2006	Pawnee Substation	1
W21	-	201	Wind	Dec 2006	RMEC-Green Valley line	1
W21	P27	300	Wind	Dec 2006	RMEC-Green Valley line	1
W3	-	304.5	Wind	Dec 2009	Goshen County, WY	1
W4	P1	304.5	Wind	Dec 2007	Washington County, CO	1
W5	-	304.5	Wind	Dec 2007	Logan County, CO	1
W9	P25	400	Wind	Dec 2006	Pawnee Substation	1
W13	-	102	Wind	Sep 2007	Wauneta/Beaver Creek/N Yuma	1
W1	-	800	Wind	Sep 2009	Green Valley Sub	1
W12	-	154	Wind	Sep 2007	tap Ault-Fort St Vrain 230 kv line.	1

Public Service Company of Colorado
2005 All Source RFP Bids

Map Designation	LGIP Map Designation	MW Capacity	Generator Type	In-Service Date	Interconnection / Delivery Point	Zone
B1	-	3.6	Biomass	2007	Smoky Hill Substation	2
B3	-	3.2	Biomass	2007	Near south Gun Club Road, Aurora	2
C11	P2	486.8	Coal	2011	Comer Point	2
G17	P23	483	Gas	2009	New sub on Midway-Daniels Park 230kV	2
G30	-	294	Gas	2009	Lamar-Midway line	2
G14	P21	264	Gas	2007	Blue Spuce Switchyard	2
G14	P21	132	Gas	2007 or 2008 for 2nd unit	Blue Spuce Switchyard	2
G14	P21	264	Gas	2013	Blue Spuce Switchyard	2
G17	P23	266	Gas	2007 or later	New sub on Midway-Daniels Park 230kV	2
G19	-	285	Gas	2008 or 2009	New sub on Pawnee - Daniels Park 230kV	2
G22	-	79	Gas	2007 or 2008	Mapleton sub	2
G1	-	165	Gas	2007	near Smoky Hill	2
G2	-	123.8	Gas	2007	near Rocky Mtn Arsenal	2
G7	-	165	Gas	2008	Strasburg Colo	2
G8	-	165	Gas	2008	Smoky Hill	2
W2	P14	280	Wind	Jul 2007	Comer Point	2
W6	P15	70.5	Wind	2006	tap PSCo's Pawnee-Daniels Park 230 kV line	2
W16	P12	150	Wind	2007	tap Midway to Daniels Park 230 kV line	2
W15	-	100.5	Wind	Feb 2007	Tri State Big Sandy	2
W7	P17	200	Wind	Dec 2006	Comer Point	2
C3	-	603	Coal	Oct 2010 or Oct 2011	Lamar Substation	3
W19	P9	280	Wind	2007 or 2008	Lamar Substation	3
W10	P16	150	Wind	Dec 2006	Lamar Substation	3
W17	-	159	Wind	Dec 2006	Lamar Substation	3
W8	P18	279	Wind	Nov 2007	Lamar Substation	3
W14	P26	75	Wind	Nov 2006	Lamar Substation	3
W11	-	120	Wind	Dec 2006 or 2008	NE New Mexico	3
G21	-	37	Gas	2007 or 2008	115kV bus at Alamosa terminal sub	4
Number of Bids	75					
Net of Bids	34	Number of bids minus bids accounted for on CO LGIP requests table & bid duplicates.				
Zone 1 Totals (MW)	9,840					
Zone 2 Totals (MW)	3,450					
Zone 3 Totals (MW)	1,666					
Zone 4 Totals (MW)	37					

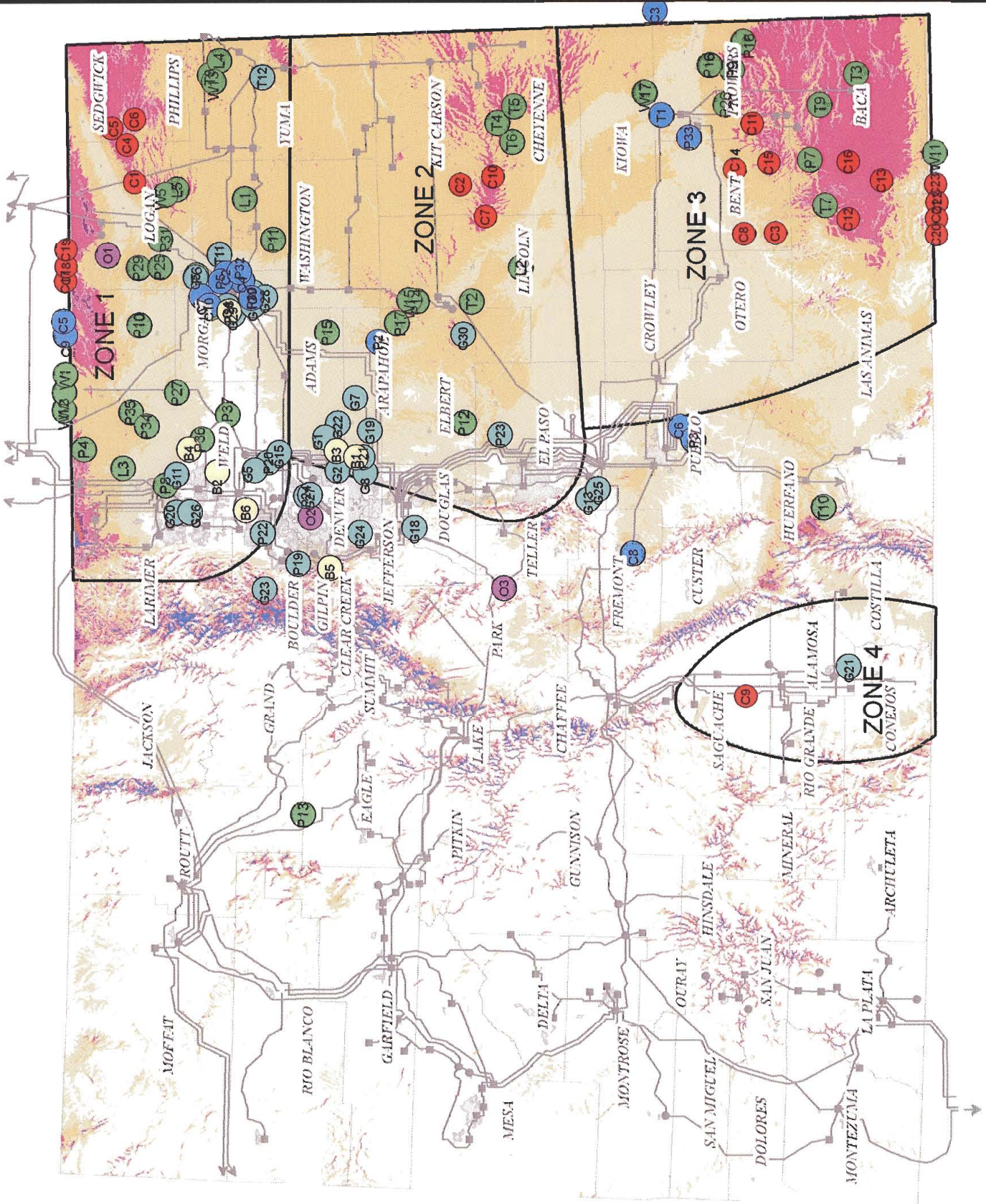
Locations based on Comments for Colorado Senate Bill 100					
Map Designation	MW Capacity	Generator Type	ISD	Location	Zone
C1	150	Wind	1/1/2009	Northeast Colorado	1
C4	350	Wind	1/1/2008	Northeast Colorado	1
C5	350	Wind	1/1/2009	Northeast Colorado	1
C6	400	Wind	1/1/2010	Northeast Colorado	1
C17	400	Wind	1/1/2011	Southeast Wyoming	1
C18	250	Wind	1/1/2010	Southeast Wyoming	1
C19	200	Wind	-	Southeast Wyoming	1
C2	200	Wind	1/1/2010	East-Central Colorado	2
C7	350	Wind	1/1/2010	East-Central Colorado	2
C10	1000	Wind	1/1/2011	East-Central Colorado	2
C3	300	Wind	1/1/2011	Southeast Colorado	3
C8	400	Wind	1/1/2010	Southeast Colorado	3
C11	69	Wind	1/1/2009	Southeast Colorado	3
C12	1000	Wind	1/1/2011	Southeast Colorado	3
C13	1000	Wind	1/1/2011	Southeast Colorado	3
C14	300	Wind	1/1/2011	Southeast Colorado	3
C15	300	Wind	1/1/2011	Southeast Colorado	3
C16	100	Wind	1/1/2009	Southeast Colorado	3
C20	150	Wind	-	Central New Mexico	3
C21	100	Wind	-	Central New Mexico	3
C22	100	Wind	-	Central New Mexico	3
C23	200	Wind	-	Central New Mexico	3
C9	1300	Solar	1/1/2013	San Luis Valley Colorado	4
Number of Locations	23				
Zone 1 Totals (MW)	2,100				
Zone 2 Totals (MW)	1,550				
Zone 3 Totals (MW)	4,019				
Zone 4 Totals (MW)	1,300				

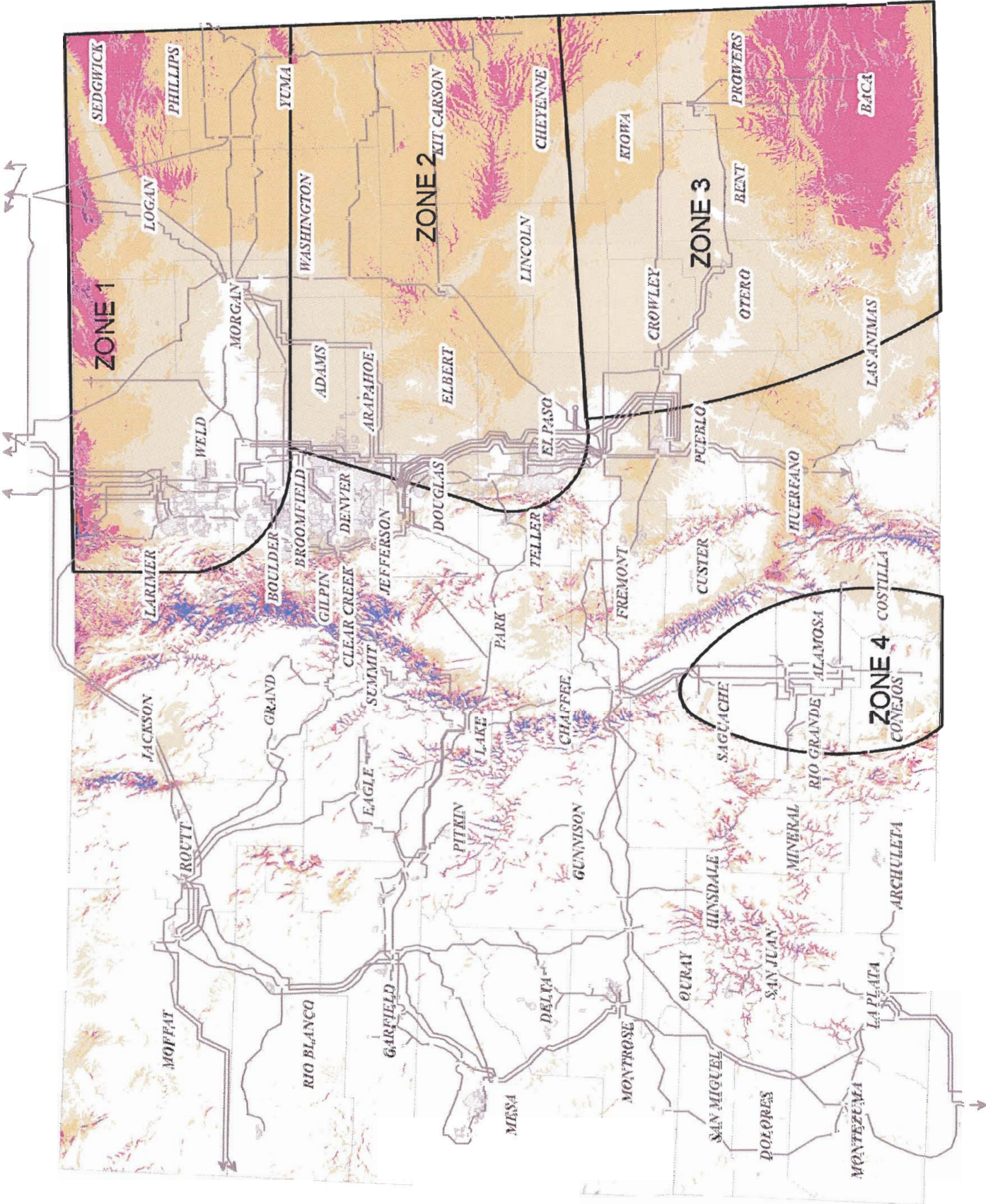
All Locations
(LGIP, All Source,
SB100 Comments)
with Wind

Legend

- BIOMASS
- COAL
- GAS
- OTHER
- SOLAR
- WIND

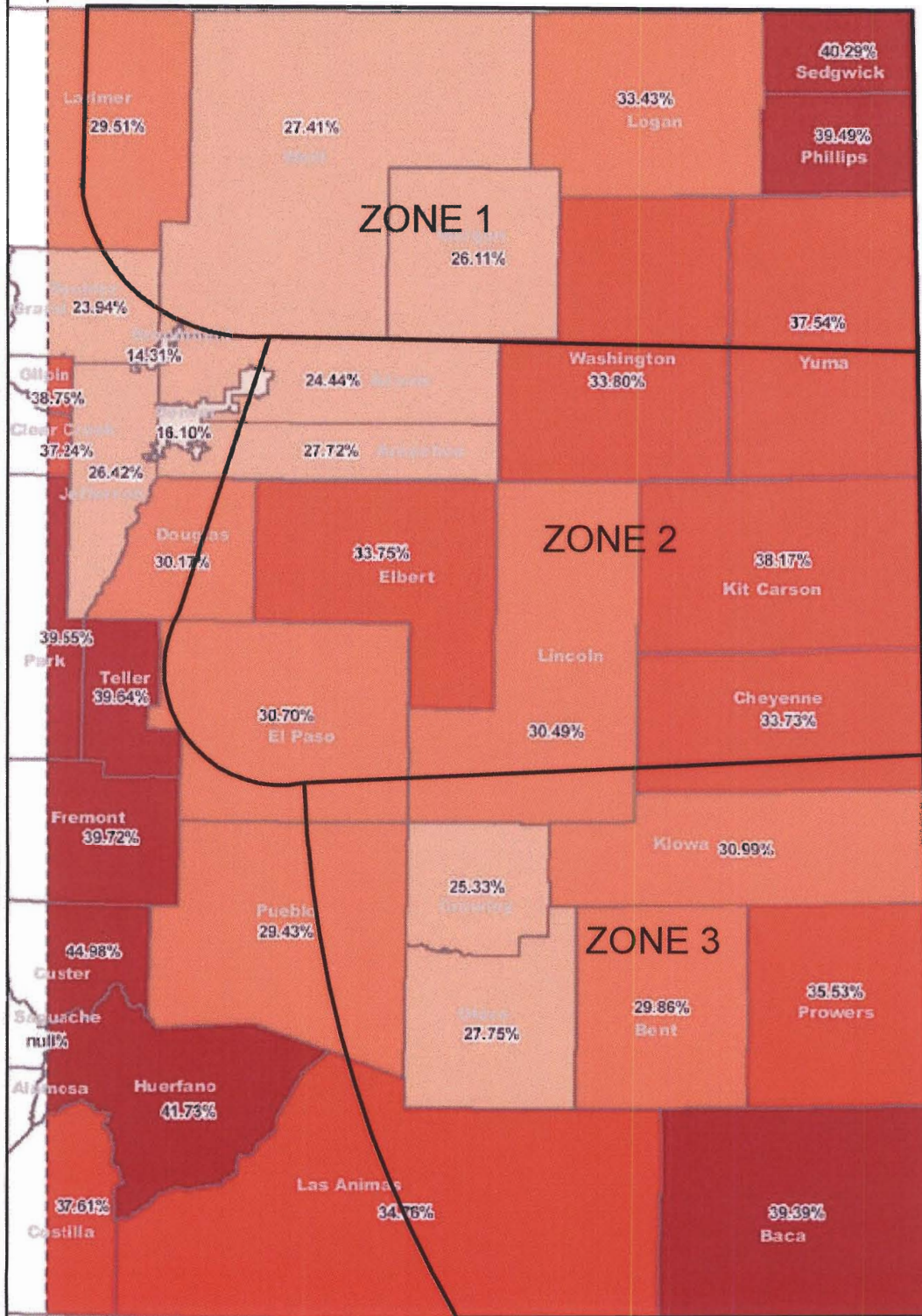
P = PSCo
T = Tri-State
L = Loveland WAPA





Eastern Colorado Average Net Capacity Factor by County

with Energy Zones added



Net Capacity Factor GE 1.5SL

- 14.31% - 21.36%
- 21.37% - 27.81%
- 27.82% - 33.7%
- 33.71% - 39.08%
- 39.09% - 44.98%

Model Data Extent

Note: County boundaries are not indicative of weather regimes. Large ranges of high and low average capacity factor may exist within and across counties.

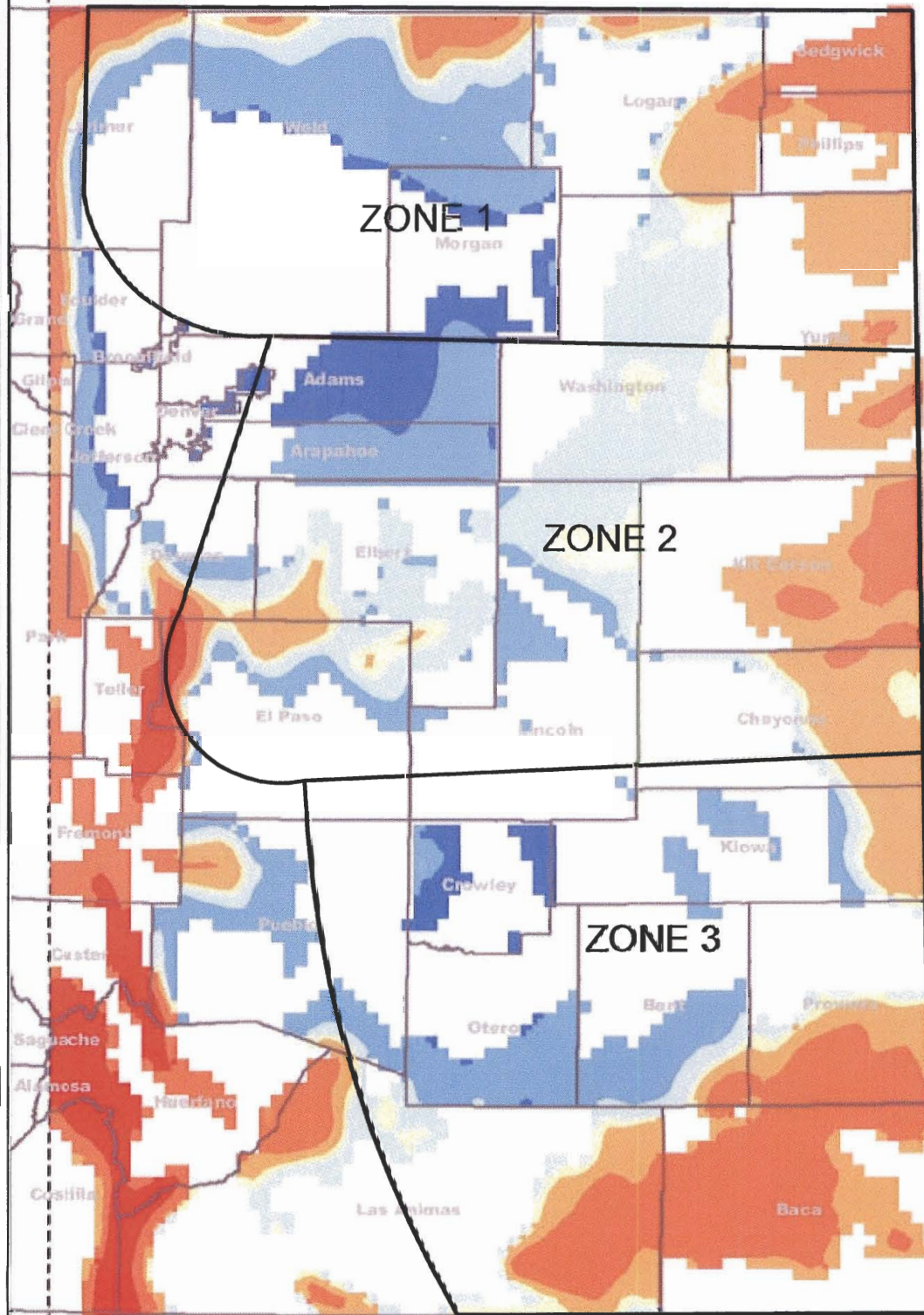
Net capacity factor was calculated by reducing the gross capacity factor by 13%.



Projection: Lambert Conformal Conic
Datum: NAD83
Model Wind Turbine: GE 1.5SL
Model Wind Data Height: 80.1 m
Source: Wind data and topographic data property of WindLogics Inc.
Data Date: produced by EDR and others
Report associated with subject to terms of agreement

Eastern Colorado Top 50% Net Capacity Factor Values by County

with Energy Zones added



NCF Values

GE 1.5SL

Dark Blue	14.46 - 28.17
Medium Blue	28.18 - 33.92
Light Blue	33.93 - 36.33
Yellow	36.34 - 37.34
Orange	37.35 - 39.74
Red-Orange	39.75 - 45.49
Red	45.50 - 59.20

Model Data Extent



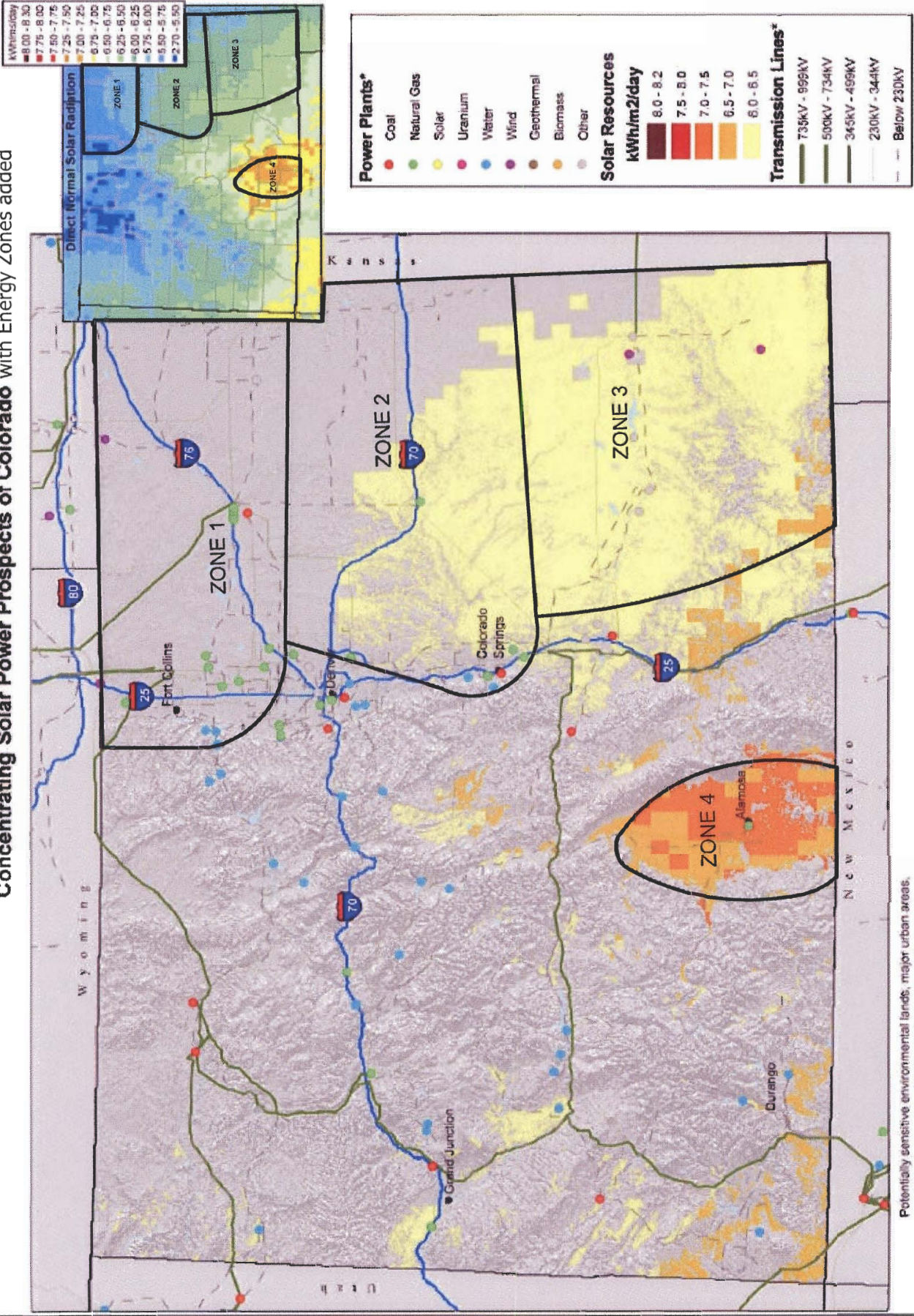
Note: Data shown is the top 50% of NCF values for each county.

Net capacity factor was calculated by reducing the gross capacity factor by 13%.



Projection: Lambert Conformal Conic
 Datum: NAD83
 Model: WIND TURBINE GE 1.5SL
 Model Wind Data Height: 60.0 m
 Source: WindLogics and geographic data property of WindLogics, Inc.
 Data files produced by E2E and others.
 Reproduction and use subject to terms of agreement.

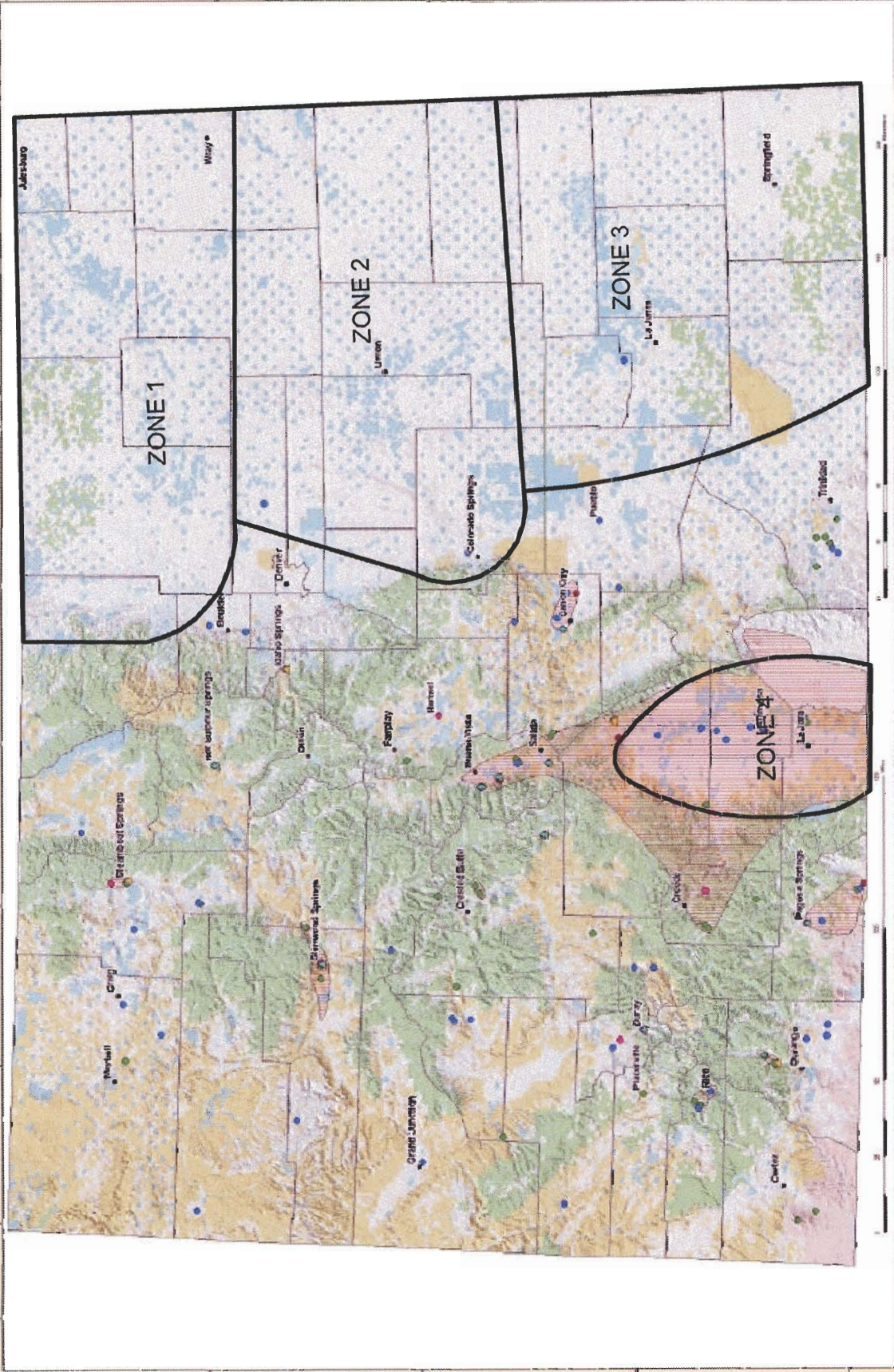
Concentrating Solar Power Prospects of Colorado with Energy Zones added



Potentially sensitive environmental lands, major urban areas, water features, areas with slope > 3%, and remaining areas less than 1 sq km were excluded to identify those areas with the greatest potential for development.
 The direct normal solar resource estimates shown are derived from 10 km SUNY data, with modifications by NREL.

* Source: POWERmap, ©2007 Platt, a Division of the McGraw-Hill Companies

Colorado Geothermal Resources with Energy Zones added



Map Prepared by Public Lands and State Lands
 Public Lands No. 00001, M.P. 200-10 (April 2007)
 November 2008

Map Prepared by:
 F. A. P. O. S. - National Map
 1000 North 10th Street
 Colorado Springs, CO 80901
 Phone: 719.575.1000
 Fax: 719.575.1001

Geothermal Resources by:
 1. USGS (USGS, 2002) and USGS (USGS, 2002) and USGS (USGS, 2002)
 2. USGS (USGS, 2002) and USGS (USGS, 2002) and USGS (USGS, 2002)
 3. USGS (USGS, 2002) and USGS (USGS, 2002) and USGS (USGS, 2002)

Map Prepared by Public Lands and State Lands
 Public Lands No. 00001, M.P. 200-10 (April 2007)
 November 2008

Map Prepared by:
 F. A. P. O. S. - National Map
 1000 North 10th Street
 Colorado Springs, CO 80901
 Phone: 719.575.1000
 Fax: 719.575.1001

Geothermal Resources by:
 1. USGS (USGS, 2002) and USGS (USGS, 2002) and USGS (USGS, 2002)
 2. USGS (USGS, 2002) and USGS (USGS, 2002) and USGS (USGS, 2002)
 3. USGS (USGS, 2002) and USGS (USGS, 2002) and USGS (USGS, 2002)

Legend

- City/Town
- County Boundary
- State Boundary
- Region of State or Federal Geothermal Resources
- Geological Features
- USGS - 10 Degree C
- USGS - 50 Degree C
- USGS - 100 and 150 Degree C
- USGS - 200 and 250 Degree C
- Private Lands
- State of Land Management and Other Special Lands
- State Lands
- Native American Lands
- U.S. Forest Service Lands

Demarcation

- Private Lands
- State of Land Management and Other Special Lands
- State Lands
- Native American Lands
- U.S. Forest Service Lands